



MASQUE CAVIAR VERT

The first Green Caviar-infused mask, for a plumping, anti-wrinkle effect.

An immediate response to combat signs of cutaneous aging, Masque Caviar Vert has a tightening effect in order to plump up wrinkles and fine lines. Biologique Recherche has gone in search of a rare active ingredient naturally occurring in one of the “blue areas” where life expectancy is among the highest: *Caulerpa lentillifera* seaweed.

With age, the skin gradually loses its firmness, elasticity and ability to regenerate. This can lead to the appearance of wrinkles, dark spots and sagging skin. A major aesthetic concern these days, it is important to adopt a skincare routine adapted to your Skin Instant® and to take steps to protect your skin from the harmful effects of the sun & external stress factors in order to minimize the signs of cutaneous aging.

An essential ally in the fight against visible signs of cutaneous aging, **Masque Caviar Vert has an immediate tightening effect.** Formulated with Green Caviar and Collagen Segment, it has an immediate restructuring and redensifying effect, for firmer, toned skin.



PRODUCT RECOMMENDED FOR SKIN INSTANTS® AFFECTED BY CUTANEOUS AGING

Masque Caviar Vert, **with Green Caviar-infused biocellulose, combined with Collagen Segment, helps prevent the formation of wrinkles while making the skin firmer, for a smoother, fuller appearance.** An immediate response to combat signs of cutaneous aging, facial features are smoother and wrinkles are visibly reduced.

It is recommended for Skin Instants® affected by cutaneous aging.

GREEN CAVIAR

An astonishing miracle of nature, Green Caviar, also known as *Caulerpa lentillifera*, is a seaweed that grows naturally in the warm waters of the Indian and Pacific oceans, but is also cultivated off the coast of Vietnam. This rare seaweed is used in traditional Asian medicine, but is also eaten by the residents of islands considered to be “blue areas” and nicknamed “land of immortals”.

In cosmetics, it is known for being beneficial thanks to its richness in essential minerals (iodine, phosphorus, magnesium, calcium, and copper), which give it the ability to boost:



COLLAGEN I: Protein acting as a structural support for the dermis, ensuring skin firmness and tightness.

COLLAGEN IV: A major component of basement membranes, it is involved in maintaining a functional interface between the epidermis and dermis, and in maintaining mechanical stability.

LAMININ-5: It plays a key role with the basement membrane in cell communication, adhesion, and skin regeneration.

GLYCOSAMINOGLYCANS or GAGs: These maintain skin hydration thanks to their hygroscopic properties. By stimulating extracellular matrix components, this exceptional active ingredient helps prevent the formation of wrinkles and increase skin firmness through dermal redensification, for skin that looks smoother and fuller.

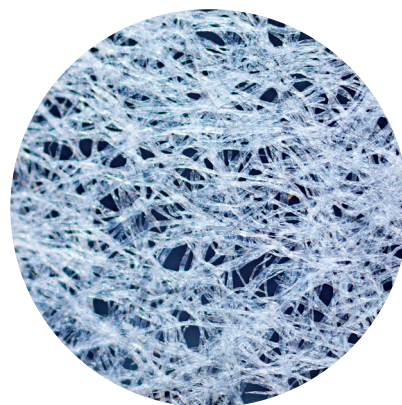
BIOCELLULOSE

This biomedical technology was initially developed to treat serious burn victims in hospitals as biocellulose has unique skin healing and regeneration properties.

Transformed in France, bacteria are cultivated on a plant-based medium with fermentation in coconut water to produce biocellulose.

Biocellulose has very high absorbency. It is capable of holding up to 100 times its weight in order to trap a high concentration of active ingredients within its structure.

It is also used in cosmetics to minimize irritation and keep the skin from becoming dehydrated.



3 ACTION PLATFORMS

Anti-Wrinkle Platform

- **Green Caviar**, seaweed growing in clusters, known for its exceptional moisturizing and, above all, anti-aging properties, and its ability to boost collagen I, collagen IV, laminin-5 and glycosaminoglycans. Green Caviar prevents the formation of wrinkles and increases skin firmness.
- **Collagen Segment**, a tripeptide made by sequencing collagen, helps boost collagen synthesis by stimulating fibroblasts, and contributes to restoring epidermis damaged by age, the sun or the environment. It helps restructure and thicken the skin, while improving its elasticity and firmness.

Smoothing Platform

- **Marine exopolysaccharide from the Iroise Sea**, secreted by planktonic microorganisms from the Iroise Sea, this active ingredient is known to stimulate collagen and elastin synthesis. It provides a tightening effect for an instant lifting effect (after 15 minutes).
- **Blue Agave Yeast Extract**. Rich in oligosaccharides, this extract reactivates the natural mechanism of hyaluronic acid synthesis. It improves skin condition, fights the effects of premature skin aging, smooths facial features and plumps fine lines.

Tensor Platform

- **Lift Matrix 3D** is an optimized combination of two polysaccharides, one of marine origin and the other of biotechnological origin. Combined, they form a breathable 3D matrix on the surface of the epidermis, providing an immediate tightening effect while remaining supple and flexible like a second skin.
- **Complex of Red Seaweed and Tara Fruit Extract** will form a strong, flexible, and non-occlusive invisible grid on the skin, mimicking its qualities and functions. It provides a tightening and lifting effect, which helps improve the skin's micro-surface.

TREATMENT BENEFITS

- Combats the signs of skin aging
- Plumps up and fills wrinkles and fine lines
- Restores skin vitality
- Tightens the skin
- Smooths facial features

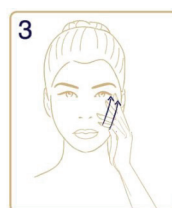
RECOMMENDATIONS FOR USE



1 Clean and dry the skin on your face and neck. Open the sachet, lay the mask out flat, and remove the protective film from both sides.



2 Apply to the skin. Use your fingertips to smooth out the mask so that it adheres perfectly to your skin, and leave it on for 15 minutes.



3 Remove and discard the mask. Perform smoothing movements from the center to the outside, from the neck to the forehead.

ABOUT BIOLOGIQUE RECHERCHE

For over 40 years Biologique Recherche's unique methodology has built a strong reputation for astounding effectiveness based on a clinical approach to skincare, delivering immediate and long-lasting results.

Combined with highly customized protocols and meticulous procedures which recondition the epidermis, Biologique Recherche's extensive range of skincare products are highly concentrated in botanical, marine and biological active ingredients that are formulated with no artificial fragrance in its own laboratory in France.

Biologique Recherche is the partner of choice in over 85 countries for exclusive medical spas and day spas in addition to the world's premier luxury hotel spas. Its flagship, the Ambassade, is located at 32 avenue des Champs Elysées in Paris.

Press contact: adeline.pastor@biologique-recherche.com – Tel.: +33 (0)6 17 51 73 06

BIOLOGIQUE RECHERCHE AMBASSADE
32, avenue des Champs-Élysées - 75008 Paris
www.biologique-recherche.com